



**180°/360° Fisheye Mini Dome**

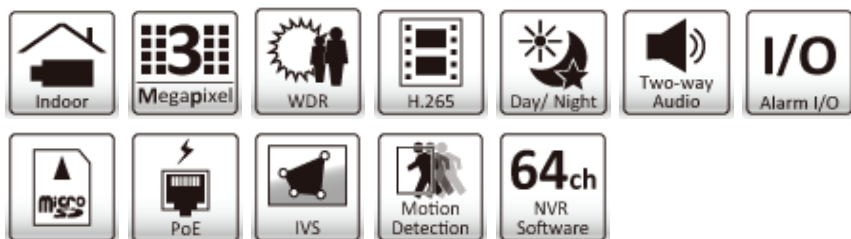
**H.265, 50% lower bitrate**

**30fps @ 2048 x 1520**

**IVS**

**Edge Storage**

## AirGoggle™ NVC660MP3 FE Panoromic Fisheye IP Camera



AirGoggle™ NVC660MP3 FE Panoromic Fisheye IP Camera is a compact, yet powerful fisheye dome camera featuring many cutting-edge technologies. The high resolution fisheye lens provides 360° surround view with image detail even at the normally weak edges; the backside illuminated 4-Megapixel image sensor ensures good low light sensitivity; our advanced fisheye dewarping algorithms keeps distortion lower than others while putting less computing loading on the server; and last but not least, video can be streamed in the ultra-efficient H.265 format, which has up to 50% lower bitrates and cuts your bandwidth and storage requirements in half.

It also features a removable IR-cut filter, MicroSD/SDHC/SDXC edge storage, PoE, two-way audio and alarm input/output, making it an extremely versatile camera with maximum coverage.

### Features

- 1/3" 4-Megapixel CMOS sensor
- H.265, H.264, and Motion JPEG compression
- 30fps @ 2048 x 1520
- 1.05mm, F2.0 fisheye lens
- WDR
- IVS (intelligent video surveillance)
- True day & night with automatic removable IR-cut filter
- Two-way audio and built-in microphone
- 1 x alarm input, 1 x alarm output
- Edge storage
- RTC with built-in battery
- SSL v3 advanced HTTPS encryption
- Supports Samba network storage
- Multi-lingual user interface
- Free 32-channel NVR software

### WDR

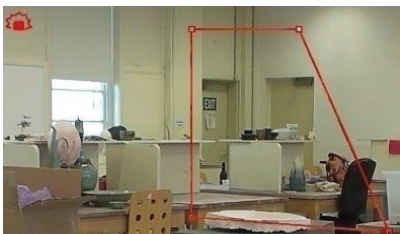


WDR off



WDR on

### IVS Pro

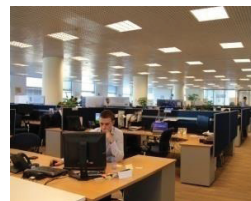


Perimeter Detection



Tripwire Detection

### Applications



1. Office
2. Public Area

## TECHNICAL SPECIFICATIONS

Camera	
Model	NVC660MP3 EF 3MP Panoramic Fisheye IP Camera
Image sensor	1/3" 4-megapixel CMOS sensor
Lens	F2.0, 1.05mm
Angle of view	180° horizontal 160° vertical
Min illumination	0.05 lux @ F2.0 (color) 0.001 lux @ F2.0 (B/W)
Day/Night function	Mechanical IR cut filter

Video	
Video compression	Motion JPEG H.264 baseline/ main profile/ high profile H.265
Resolutions	Motion JPEG/ H.264/ H.265: 3 resolutions including 2048 x 1520, 640 x 480 and 320 x 240
Frame rate	Motion JPEG/ H.264/ H.265: up to 30 fps at 2048 x 1520
Video streaming	Simultaneous Motion JPEG, H.264, H.265 Controllable frame rate and bandwidth Support unicast (Real Time Streaming Protocol)
Image settings	Rotation: mirror, flip, mirror flip WDR Brightness, contrast, saturation, sharpness Overlay capabilities: time, date, text and privacy Image ROI Defog

Audio	
Audio streaming	Two - way (full duplex)
Audio compression	G.711 $\mu$ law, a law, AMR Built - in microphone, line input and line output

Network	
Security	Multiple user access levels with password protection, HTTPS encryption Bonjour, TCP/ IP, DHCP, DNS, DynDNS, PPPoE, ARP, ICMP, FTP, SMTP, NTP, UPnP, RTSP, RTP, RTCP, HTTP, HTTPS, SSL, TCP, UDP
Users	10 simultaneous users

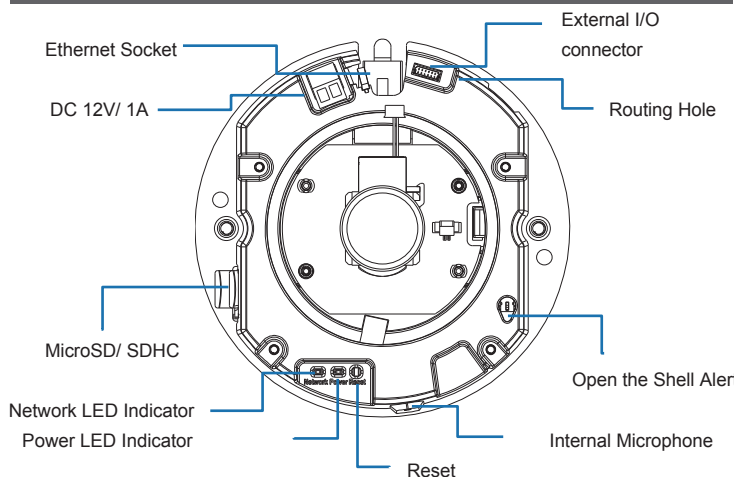
Alarm and Event Support	
Alarm and event management	Input: alarm buffer, alarm input, motion detection Output: network storage, FTP, SMTP, HTTP event, alarm Pre- and post alarm buffer
IVS	Tampering detection, tripwire, perimeter

System	
Connectors	RJ-45 Ethernet 10/ 100 Base-T (PoE) Reset button 2pin terminal block for DC power 6pin cable for 1 alarm input, 1 output, 1 audio line in 1 audio line out
Local storage	MicroSD Card slot Power status indicator Network link indicator
Software integration	ONVIF 2.4 & Profile S
Video management software	Camera Installation Tool & Video Management Software for viewing recording and archiving up to 32 cameras

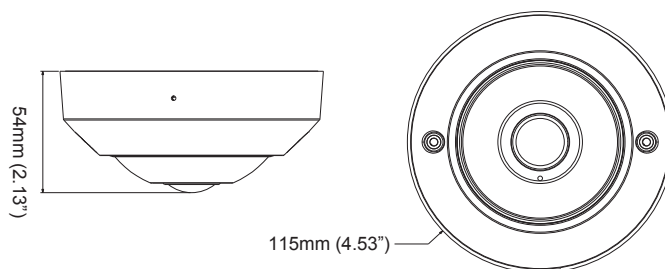
General	
Casing	Aluminum casing
Power	DC 12V or PoE IEEE 802.3af class 1 Power consumption: Max 4.65W
Operating conditions	-10° ~ 50°C ( 14° ~ 122°F)
Installation, management, and maintenance	camera management tool on CD and web - based configuration. Configuration of backup and restore firmware upgrades over HTTP.
Minimum web browsing requirement	Pentium 4 2.8GHz (or equivalent AMD) 256MB RAM graphic cards (or equivalent on-board graphic cards) 1G RAM Window XP, Vista, or Windows 7 Mac OS Leopard 10.5 or later
Dimensions	$\phi$ 115 x 54mm ( $\phi$ 4.53" x 2.13")
Weight	240g (0.53lb)
Included accessories	Quick installation guide, CD (Camera Installation Tool, Management Tool, User Manuals, Camera Language Packs) mounting and connector kits
Certification	CE, FCC

Integration	
software	For viewing, recording and archiving up to 32 ch cameras

### Part Names and Functions



### Dimensions



THE LEADING  
OUTDOOR NETWORK  
APPLIANCE COMPANY

Total Turnkey Solutions for Outdoor PoE, Wired/Wireless, and IP Video Applications

Product Information Online: <http://www.inscapedata.com/fisheye-cameras.htm>

Corporate Headquarters  
1620 Oakland Road, Suite D101, San Jose, CA 95131, U.S.A.  
PHONE +1.408.392.9800 FAX +1.408.392.9812  
EMAIL [sales@inscapedata.com](mailto:sales@inscapedata.com)

© Copyright 2016 Inscape Data Corporation, All Rights Reserved. LinkPower, AirEther, AirGoogle and Inscape Data are trademarks of Inscape Data Corporation

Disclaimer: While every effort is made to ensure the information given is accurate, Inscape Data Corporation does not accept liability for any errors or mistakes which may arise. All specifications are subject to change without notice.